

REACHING A KEY MILESTONE

ON THE BIM JOURNEY



Paul Y. is proud to have successfully received ISO 19650 Kitemark certification, making us the first truly Hong Kong rooted contractor to achieve international standard Building Information Modelling (BIM) accreditation for design, construction and commissioning in the delivery of construction projects.

Receiving ISO 19650-1:2018 and ISO 19650-2:2018 accreditation is a key milestone in Paul Y.'s digital transformation journey, and a clear recognition of our commitment to being at the forefront of promoting application of BIM technologies in project management and delivery. It further demonstrates our perseverance in pursuing client satisfaction and collaboration for

Information Management Platform Elevating BIM Process

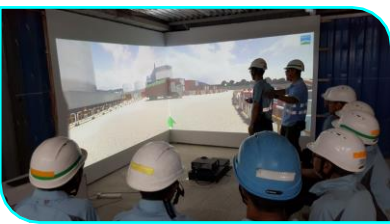
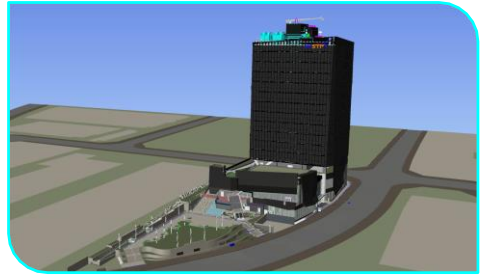


To enhance information exchange on our projects, we have implemented a common data environment (CDE) for a single source of information to streamline workflow and provide coordinated platform for collecting, managing and disseminating structured and unstructured information across a project lifecycle. In compliance with ISO 19650, our CDE enables effective transitioning from a project information model to an asset information model conducive to smooth handover of BIM models to clients.

Implementing Diversified BIM Solutions

BIM has been applied throughout the different stages of our projects and most notably on the following recently completed and current projects:-

- **Data Technology Hub, Tseung Kwan O** - BIM was integrated with 3D scanning technology and equipment to provide more accurate and complete simulation to allow preview of the project's design, construction and control. With the aid of a comprehensive CDE platform, the BIM as-built model (LOD 500) can be readily shared with the client to support its operation and maintenance of its property asset in the long run.
- **1224 – Place Student Residence at Police School Road, Wong Chuk Hang for The University of Hong Kong** - a pilot Modular Integrated Construction (MiC) project selected by the Development Bureau where BIM technology is currently being applied to support off-site fabrication and improve site logistics planning for delivery and installation of MiC modules.
- **Mount Anderson, No. 3 Off Anderson Road, Kwun Tong, Kowloon** - 7D BIM is being used on this current project and all-inclusive project information is being stored to assist in improving future operation, facilities management and maintenance. A cloud-based 7D BIM platform is being deployed to allow real-time sharing of project information to enhance transparency and strengthen communication among the project team.



Supporting Construction Safety

While BIM can leverage elimination of specific hazards and efficient planning of site logistics in terms of progress and safety, BIM (4D animation) and Virtual Reality (VR) technologies can also be used effectively in safety training. Such use of innovative technologies and applications provides immersive interactive safety training, using VR devices and motion sensors and simulators to simulate real life situations, which enhances the training experience for workers and promotes safety awareness. Such training can also help enforce effective safety management through improving understanding of safety procedures and guidelines by workers before embarking on specific tasks such as lifting operations and working at height.



Nurturing Talents for the Industry

Paul Y. has dedicated considerable resources to increase the understanding of BIM and to equip our people to become accredited BIM professionals, with an aim to grow the talent pool to support smart city construction. We offer training at all levels from management to frontline colleagues, and to date have organised BIM training courses for over 200 staff. Upon completion of basic BIM training, eligible colleagues are sponsored to achieve BIM accreditation as CIC Certified BIM Coordinators and CIC Certified BIM Managers.

We are fully committed to the continued development and implementation of BIM to ensure all our projects are delivered safely, in a timely manner and to the highest of standards to meet client expectations.

